

43 Tooth Plastic Sprocket Industrial

WITH ADAPTOR PLATE MOUNTED ONTO GLIDEROL/STEEL-LINE DRUM.

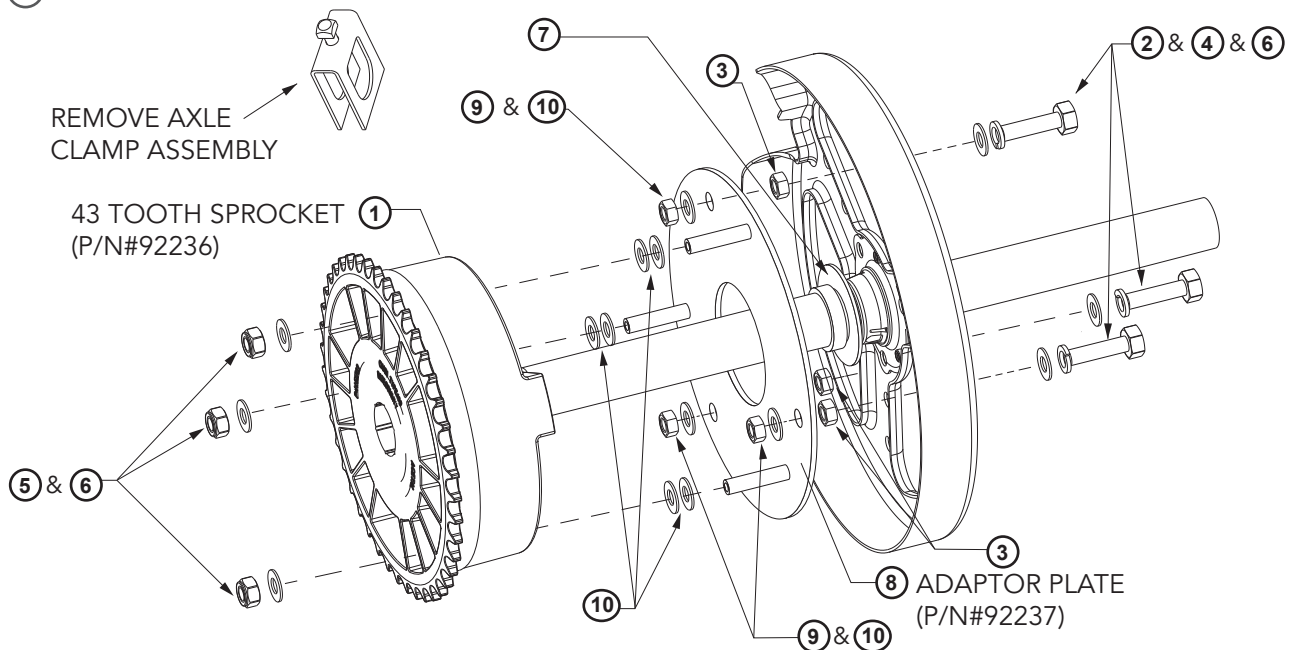
43 TOOTH SPROCKET KIT - SAP# ORDER NO. 92236		
ITEM	DESCRIPTION	QTY
1	43 TOOTH SPROCKET	1
2	M10X1.5X40 BOLTS	3
3	HEX SERRATION FLANGE NUT M10	3
4	SPRING WASHER ID10	9
5	NYLOCK NUT M10	3
6	FLAT WASHER ID10	6
7	COLLAR ASSY KIT	1

*STEEL ADAPTOR PLATE ASSY - SAP# ORDER NO. 92237		
ITEM	DESCRIPTION	QTY
8	ADAPTOR PLATE ASSY	1
9	HEX SERRATION FLANGE NUT M10	3
10	FLAT WASHER ID10	9

* The Steel Adaptor Plate Assy is only required for non-B&D Doors

Installation Instruction

1. Position door for clear access to the end of the axle and drum.
2. Remove axle clamp assembly.
3. Fit large washer and collar assembly kit (7) and tighten set screw (this prevents end float).
4. Insert the 3 x M10x1.5x40 bolts (2), 3 x spring washers (4) and 3 x flat washer (6), through the back of the drum and secure with hex serration flange nuts (3).
5. Mount optional adaptor plate assembly (8) over the M10x1.5x40 bolts (2) and secure with 3 x flat washer (10) and 3 x hex serration flange nuts (9). To align the sprocket fit up to 6 x flat washer (10).
6. Slide on the 43 Tooth Sprocket (1) and secure with 3 x flat washer (6) and nylock nuts (5) onto the spacer on the adaptor plate (8).



NOTE: If the optional adaptor plate is not purchased the 43 Tooth Sprocket is secured to the drum after collar assembly kit (7) is attached by (see insert):

- Inserting the 3 x M10x1.5x40 bolts (2), 3 x spring washer (4) and 3 x flat washers (6), through the back of the drum and secure them with 3 x hex serration flange nuts (3).
- To align the sprocket fit up to 6 flat washers (4) onto one or two of the bolts before sliding on the 43 Tooth Sprocket (1) and secure with 3 x flat washers (6) and nylock nuts (5) (5 & 6).

