

# Panelift® Panelift Icon™

## Single & Double End Stile Quick Closer

installation instructions PART NO: SD0002



$$\text{door height} - \text{track curve FTS (small curve) 235mm} = \text{vertical track length}$$

Measurement	Cable drums		
	4-8 & 4-13	5-18	
headroom	end bearing brackets	combo brackets	end bearing brackets
Quick closer kit = front torsion	180mm	190mm	230mm

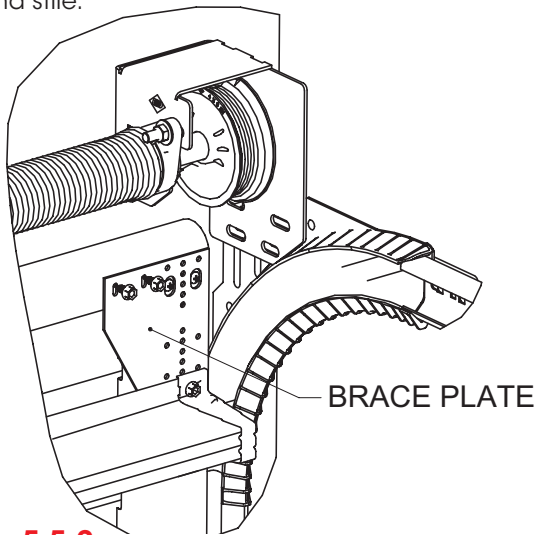
Quick Closers are available with small radius curve doors. Vertical tracks need to be cut to size before fitting a quick closer.

a) Using Figure 5.5.1 and tables above calculate the track length and headroom requirements, before ensuring tracks are cut to correct size.

b) Install the brace plate:

**For single end stiles** - on each side of the top panel as shown in Figure 5.5.2. Locate the plate over the (2) two stile screws and secure each sides brace plate with (2) two tek screws.

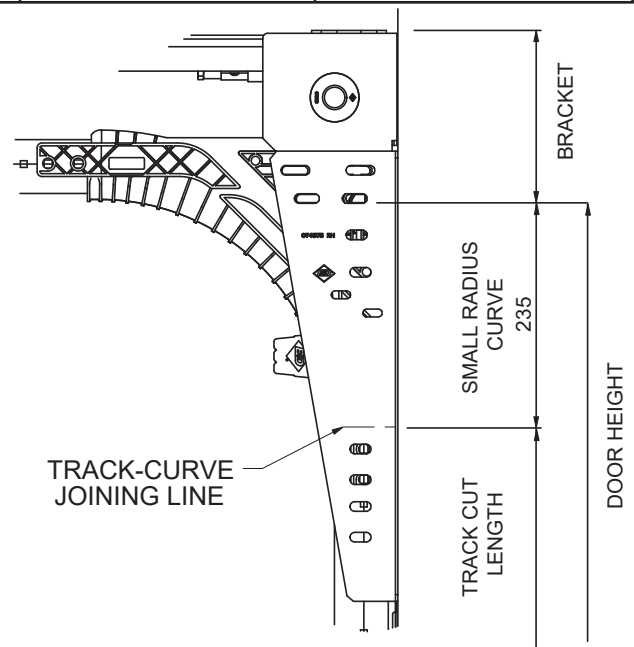
**For double end stiles** - the same as single end stiles with the second brace plate in the same position on the second stile.



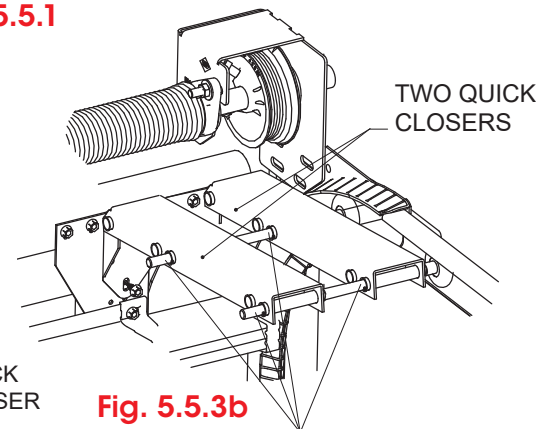
**Fig. 5.5.2**

c) Assemble the quick closer with the (2) two wheel axles supplied ensuring the wheel axles are inserted through the rear of the holes provide as per Figure 5.5.3a for single stile or 5.5.3b for double end stile.

d) With the door in the closed position, attach the lower hinge plate of the quick closer to the brace plate, ensuring the (2) two wheels are sitting on the bottom of the track if a double horizontal track.

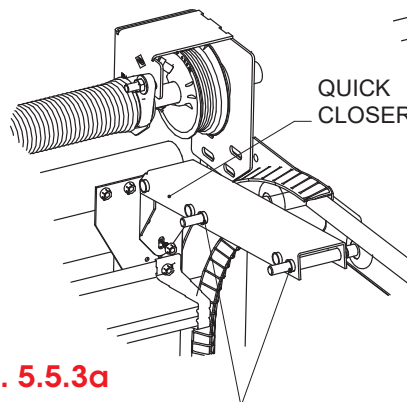


**Fig. 5.5.1**



**Fig. 5.5.3b**

LONG WHEELS AXLES INSTALLED IN BACK HOLES



**Fig. 5.5.3a**

WHEELS AXLES INSTALLED IN BACK HOLES

- a) Fasten the quick closer lower hinge plate to the brack plate on the top panel with (2) two tek screws. See Fig 5.5.4a for single stile or 5.5.4b for double stile.

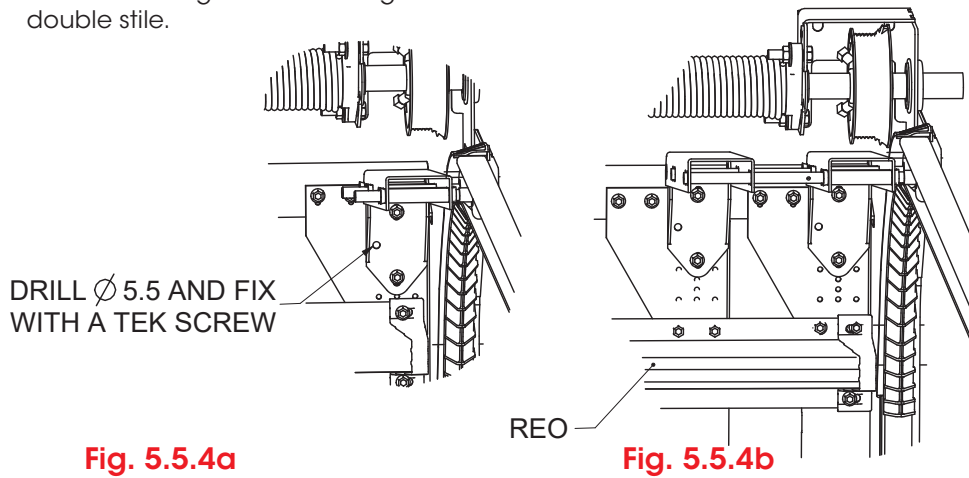


Fig. 5.5.4a

Fig. 5.5.4b



For additional strength on single end stile doors, refer to Fig 5.5.4a. Drill a 5.5mm hole through the quick closer hinge plate and brace plate and secure with a tek screw as shown.

For optimal drive through clearance an opener is required to lift the door curtain to fully open position. The hockey stick connection needs adjustment to provide such clearance.



**CAUTION:** PFT doors over 4500mm or PFI doors over 3505mm wide have additional reinforcing on panels, therefore reducing the drive through height by **80mm** when a Quick Closer is installed.

- a) Position the door bracket for the C-Rail connection at the top of the panel as per Fig 5.5.5, or as near as practical to the centre line of the quick closer's pivot point.
- a) Alternate the hockey stick bent and straight arms so the straight arm is connected to the door. The bent arm may require cutting for limited headroom installations.

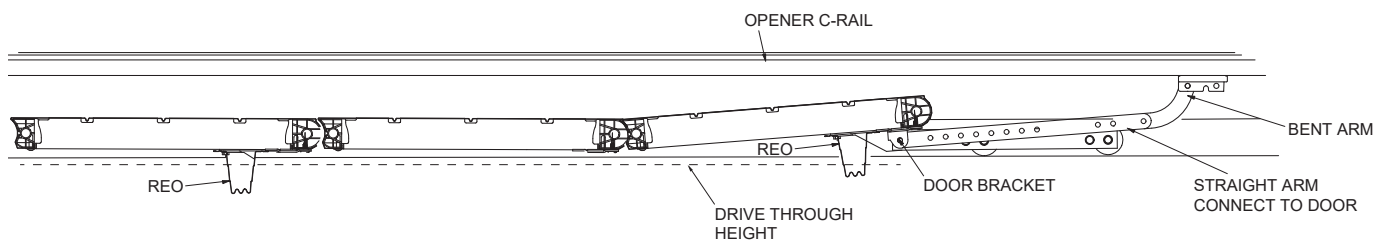


Fig. 5.5.5